



INSIGHT^{qcx}

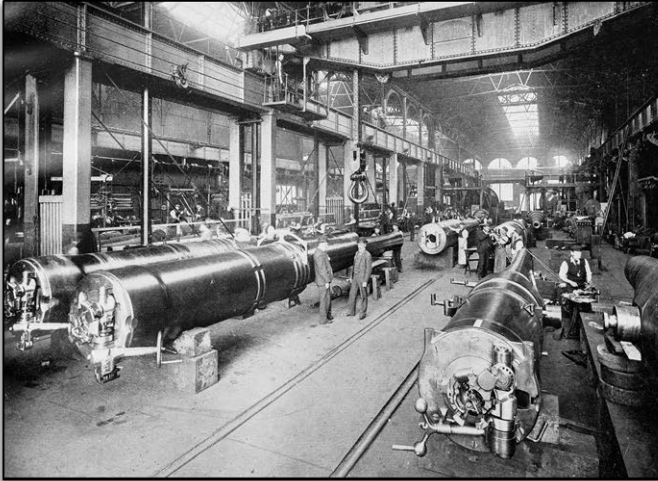
Cordless Controller



Key manufacturing processes are **COMPLEX**.

Goals THEN:

- Quality
- Productivity
- Throughput
- Repeatability
- Cost



Goals NOW:

- Quality
- Productivity
- Throughput
- Repeatability
- Cost

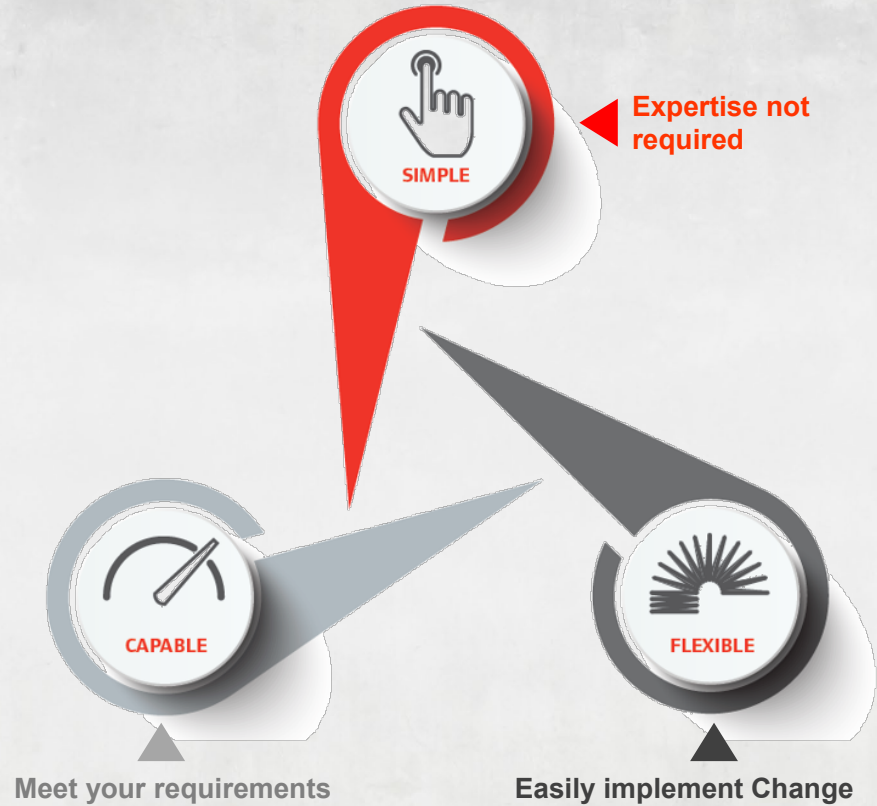
Key manufacturing goals are **SIMPLE**.

UNIVERSAL OBJECTIVE:

Implement the simplest and easiest solution to accomplish the goals of the assembly process.

At Ingersoll Rand, we believe that:

“Completely understanding and taking total control of your fastening process doesn’t have to be complicated...”

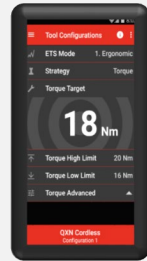


New INSIGHT Addition

Previously launched



INSIGHTqc
Corded Controller



INSIGHT Connect
Android Mobile App



Latest Addition

NEW



- Extension of **INSIGHT** platform
- *Simple, Flexible, Capable*
- Uniform user experience
- Support Cordless (QXX) including ETS
- Simply Insightful for Cordless Tools

INSIGHTqcx
Cordless Controller



SIMPLE



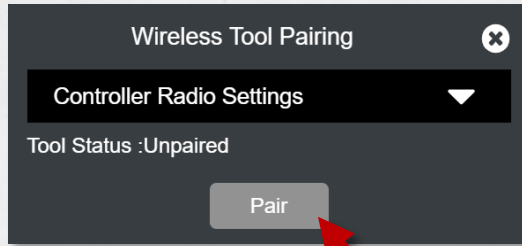
FLEXIBLE



CAPABLE

Key features & Benefits

Easy Wireless Pairing



Easy Wireless Pairing

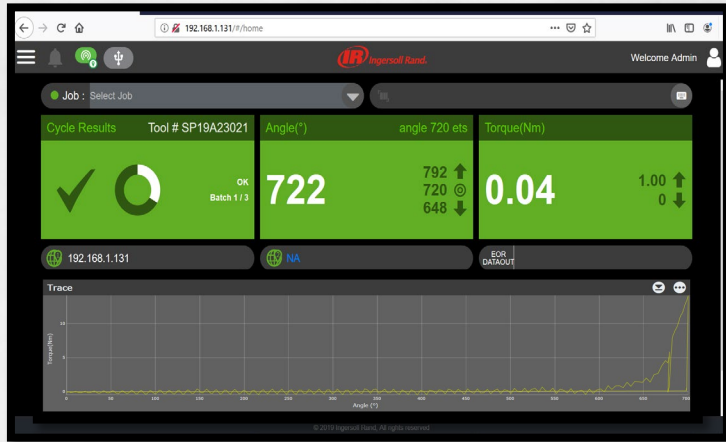
- Easy 2-Steps to pair the controller with a QXX tool
- Simple 1-Step to unpair
- No PC software required to program



Value

- Improve setup time
- Easily implement changes on the line
- Reduce downtime to swap tool

Web Based Programming



Web Based Programming

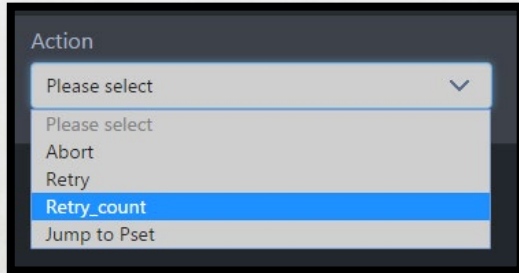
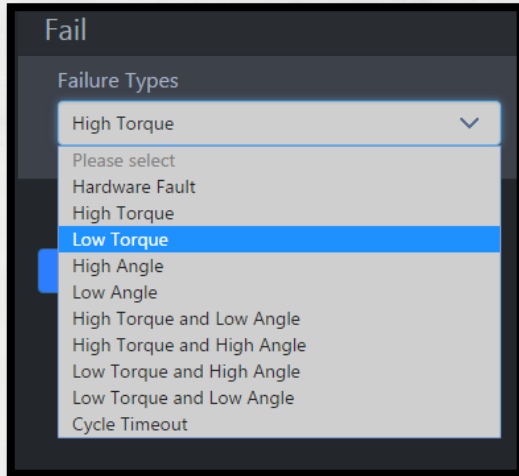
- Simple, intuitive design
- Any network device via any web browser
- No PC software to install
- Same experience on any device
- No laptop licenses required
- Administrative rights not required
- Support latest QX ETS tools



Value

- Reduce Training Costs
- Eliminate PC software license costs
- Eliminate user dependencies
- Minimize need for IT involvement
- Eliminate software to controller compatibility issues
- Improve convenience and reduce response time to controller programming needs

Integrated Job Logic



Integrated Job Logic

- Multiple PSETs can be integrated into Job Sequences (256 jobs)
- **NEW** Enable **32 Psets** on QXX tools
- Logic rules can be added to build a desired logical sequence and PSET interaction based on specific tightening results
- Provide flexibility without sacrificing control



Value

- Reduce integration costs due to possible PLC elimination
- Reduce wasted time in toggling reject or rework over rides
- Increase quality through more comprehensive rework and job strategies

Large Touch Screen



Touch screen

- 7" Display size
- Full programming functionality directly from the controller
- Visual, intuitive feedback
- Easy to use



Value

- Easily implement changes on the line – without the need for a laptop
- Reduce downtime via better response time to resolving issues

Visual Indicators



Visual Indicators

- Power On (IR logo illuminated when system is powered)
- System Ready (Green/Red indicates status)
- Remote Link (Blinking light validates correct controller is connected to remotely)
- Insightful Cycle Status Feedback (Status and diagnosis easily understood)
- MES Connection (Assurance of connectivity to critical systems)
- Both IP Addresses displayed (Quickly access and troubleshoot)



Value

- Immediately identify issues and path for correction
- Reduce downtime via better response time to resolving issues

Integrated SSD Drive



Integrated SSD Drive

- Stores an industry leading **50,000** records and tightening curves
- Stores 10,000 records each of Audit and Event logs
- Simply export data via CSV to any connected device
- Stores all program settings and data records for immediate recovery via drive swap
- View individual cycles or group by related job cycles
- Robust filter and search function to find exactly the data you need



Value

- Built- In backup of a large cache of data in the event of unforeseen network connectivity issues – Increase assurance
- System failure audits guide repair processes and reduce downtime
- Quick backup and recovery makes controller swap outs easy and fast – reducing downtime

User management



User management

**Unlimited numbers of users
- 4 profiles level**

Administrator – Access or view any screen

Supervisor – Access to view or configure any screen except User Management

Operator – View home screen only

Viewer – View of any screen



Value

- Control your level of access
- Get history on change / job done

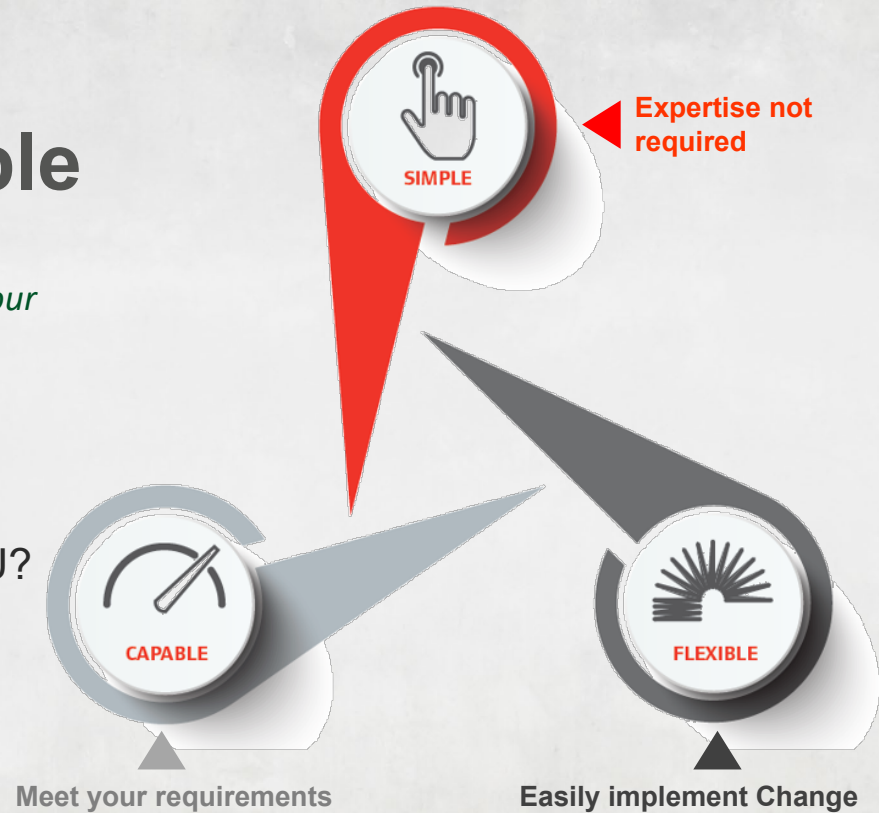
Value proposition

Simple, Flexible, Capable

“Completely understanding and taking total control of your fastening process doesn’t have to be complicated...”

What does this mean to YOU?

How does **INSIGHTqcx** provide value to YOU?



Simple

**Expertise
not required**



Benefits

- ✓ **SAVE** on selection, training, and installation costs
- ✓ **REDUCE** errors and downtime
- ✓ **REMOVE** user dependencies

Integrated
backup &
recovery

Easy Wireless
Pairing

Intuitive, visual
programming
interface



Plug & Play
accessories &
protocols

✓ No additional
software required

Bundled
controller
options



Flexible

Easily implement change



Benefits

- ✓ **EASY** line integration & rebalancing
- ✓ **REDUCE** line rebalancing costs
- ✓ **REMOVE** device dependencies

Integrated logic control



IP address is easily viewable from the front

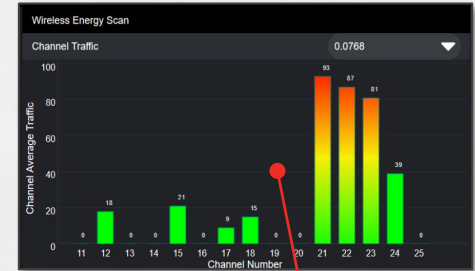
Access & Program from any web browser



Meet industry communication needs



Easy hardware & software upgrades



Onboard Wireless Energy Scan

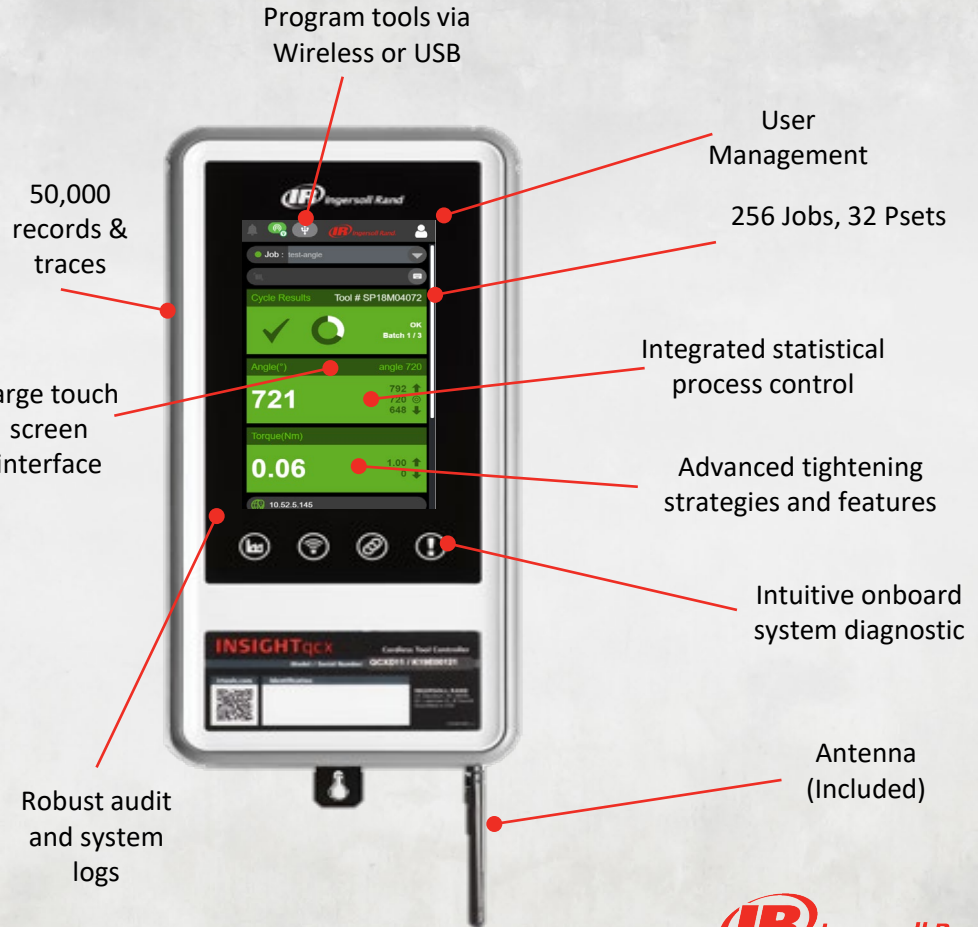
Capable

Meet your requirements



Benefits

- ✓ Get the job **RIGHT** every time
- ✓ **ASSURANCE** via traceability
- ✓ **OPTIMIZE** overall assembly productivity



- ✓ *Simple*
- ✓ *Flexible*
- ✓ *Capable*
- ✓ ***Cordless***

INSIGHT Connect App



INSIGHT Connect App



- ✓ Multiple Configuration (up to 32)
- ✓ Common Settings and General Tool Setup
- ✓ EOR on the App
- ✓ Firmware Update for Tool
- ✓ Factory Reset
- ✓ Error Codes with Description
- ✓ Calibration
- ✓ User Registration and Link to IR Customer Support Site
- ✓ Retrieve Firmware and Files from IR
- ✓ Program Torque, Angle, Speed
- ✓ Clone – Back-up and Restore
- ✓ Retrieval of Cycle Logs and Ability to Share via Email
- ✓ Audit Logs
- ✓ Multi Language Support
- ✓ Program ETS Tool
- ✓ ...



